

TCS3x7x EVM Quick Start Guide



Figure 1: TCS3771 EVM Kit (shown)

This Quick Start Guide applies to several ams EVM kits. The illustrations in this guide show the TCS3771 EVM kit, but the instructions apply to all of the kits.

OUT OF THE BOX

Each TCS3x7x EVM comes with the following components:

- Controller board v2.1
- TCS3x7x Daughterboard
- USB Cable with A connector and mini B connector
- Flash Drive with Application Software and Documents
- Quick Start Guide (not shown)

SOFTWARE INSTALLATION

Most PCs should have one or more Universal Serial Bus (USB) ports. Install the TAOS flash drive into an unused USB port.

1. Double-click the **Setup.exe** file on the flash drive, or
2. Click Start -> Click Run -> Type E: setup.exe and press Enter. **IMPORTANT:** Use the appropriate drive letter in the above command to install the software. Flash Drive will commonly be assigned the next available drive letter for example C: hard drive, D: CD-ROM, E: flash drive

The Digital Light Sensor Setup Wizard will open and guide you through the installation of the TCS3x7x host software. (Figures 2 through 8). To re-install, run the setup.exe file again. To remove the software from your computer, Select ams -> TCS3x7x EVM -> Uninstall TSL3x7x EVM or use the Windows Control Panel (Figure 9).

Connect Hardware

Plug the TCS3x7x Daughterboard into the Controller board. (Figure 1) Always use ESD procedures when handling the EVM.

Using the enclosed USB cable, plug the mini-B connector into the EVM module. Using the other end of the cable, plug the USB A-connector into a USB port on the computer.

Start Application

Click the Digital Light Sensors icon on the desktop.

Contact and Support

For detail in using the TCS3x7x EVM please refer to the User's Guide included in the documents.

If any technical difficulties are encountered, use the Tech Support page at www.ams.com/Support to submit a technical support

request anytime or call (972) 673-0759 (main) M-F 8AM-5PM CST

You may also use www.ams.com to find worldwide local representatives in your area.



Figure 2 Welcome Screen (TCS3771 shown)

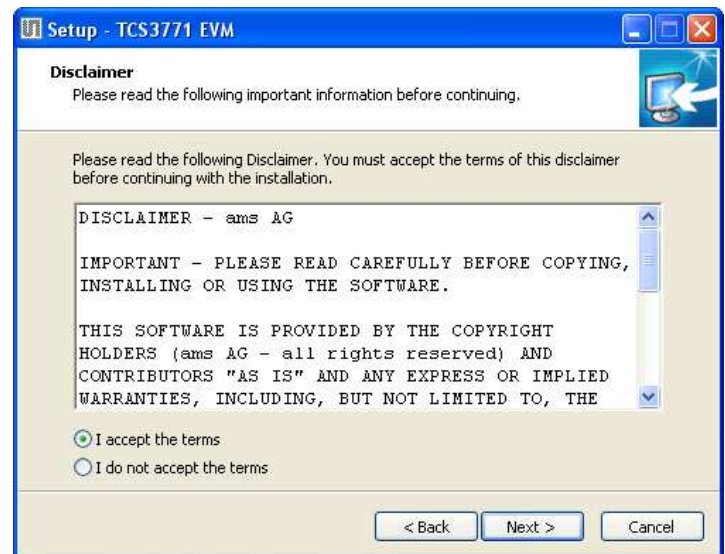


Figure 3 Disclaimer (TCS3771 shown)

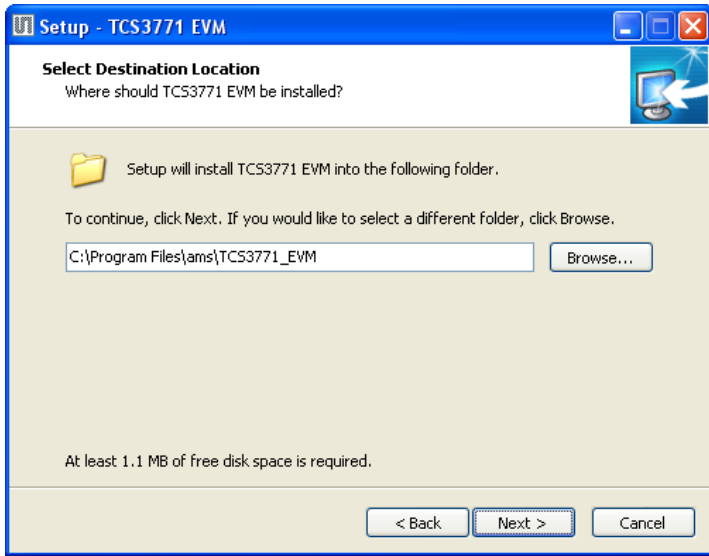


Figure 4 Select Installation Folder (TCS3771 shown)

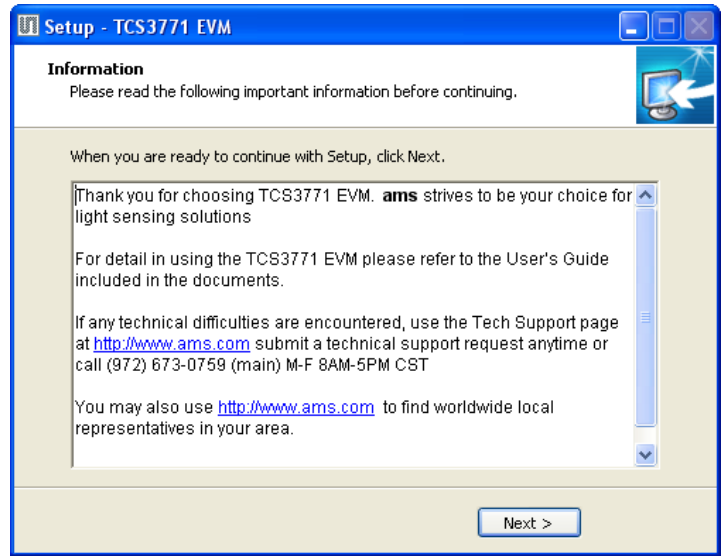


Figure 7 Thank You Screen (TCS3771 shown)

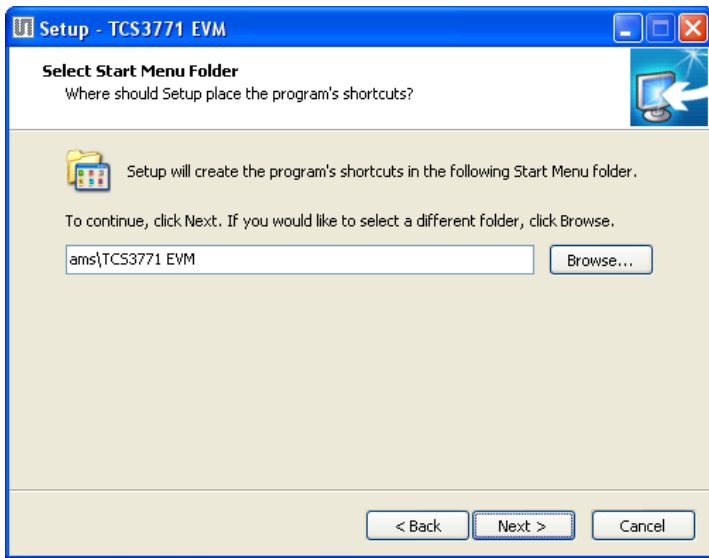


Figure 5 Select Start Menu Folder (TCS3771 shown)



Figure 8 Installation Completed (TCS3771 shown)

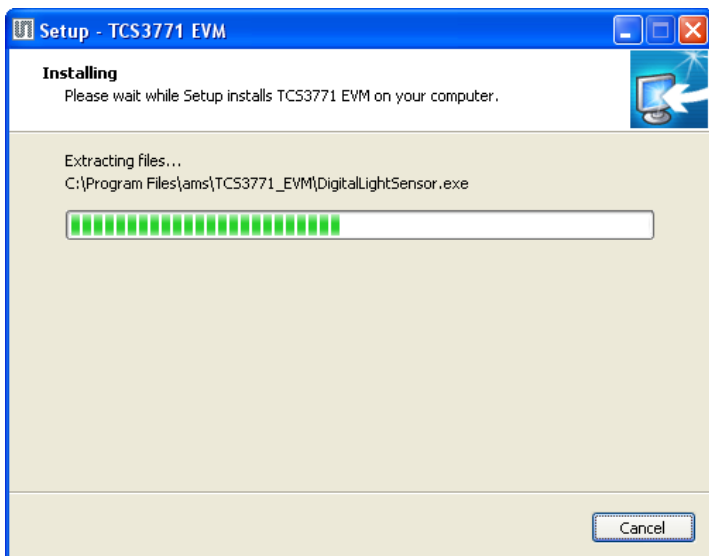


Figure 6 Installation in Progress (TCS3771 shown)

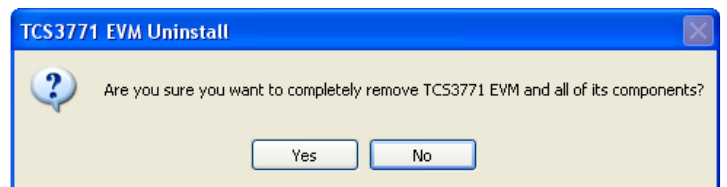


Figure 9 Remove Installation (TCS3771 shown)