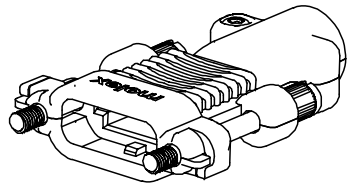
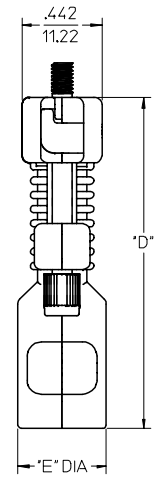
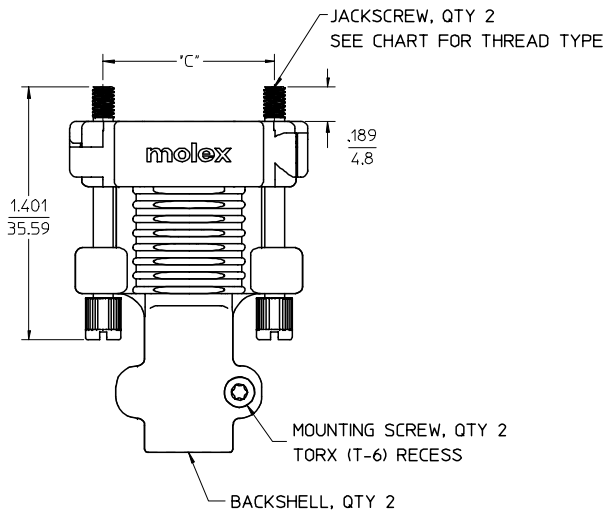
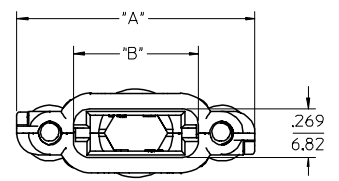


CKT SIZE	*A* DIM	*B* DIM	*C* DIM	*D* DIM	*E* DIM	CABLE OD
18	1.320/33.55	.691/17.56	.950/24.13	1.835/46.62	.490/12.45	.310/7.87
28	1.570/39.90	.941/23.91	1.200/30.48	1.835/46.62	.490/12.45	.335/8.51
38	1.820/46.25	1.191/30.26	1.450/36.83	2.270/57.65	.490/12.45	.355/9.02
48	2.070/52.60	1.441/36.61	1.700/43.18	2.478/62.93	.569/14.45	.440/11.18
72	2.670/67.84	2.041/51.85	2.300/58.42	2.741/69.62	.726/18.45	.635/16.13

- NOTES:
1. MATERIALS:  
 BACKSHELL - ZINC ALLOY DIE CAST, FINISH DULL NICKEL PLATING.  
 JACKSCREW - STAINLESS STEEL, FINISH PASSIVATE.  
 MOUNTING SCREW - STEEL ALLOY, FINISH CLEAR ZINC PLATING.
  2. PLUG CABLE KIT COMPONENTS TO BE BULK PACKAGED PER PK-75115-991.
  3. MOUNTING SCREW APPLICATION TORQUE TO BE MIN. 3 lbf-in AND NOT TO EXCEED 4 lbf-in.
  5. STRAIN RELIEF IS DESIGNED FOR THE CABLE DIAMETER SPECIFIED IN TABLE ON THIS PAGE.  
 WHEN USING SMALLER CABLE DIAMETER, USE HEAT SHRINK TUBING TO BUILD UP THE CABLE TO THE SPECIFIED DIAMETER.



18 CKT PLUG CABLE KIT



MOD JACKSCREW MATERIAL EC NO: UCP2007-1309 DRWN:MSIBARRA2007/02/27 CHKD:DMORGAN2007/03/05 APPR:SMILLER 2007/03/06	DESCRIPTION REV	QUALITY SYMBOLS ▽=0 ▽=0	GENERAL TOLERANCES (UNLESS SPECIFIED)		SCALE 2:1	DESIGN UNITS METRIC	THIRD ANGLE PROJECTION	REVISE ON CAD ONLY		
				m	INCH	DIMENSION STYLE IN/MM		TITLE		
			4 PLACES	±---	±---	DRAWN BY TMCCLELL	DATE 02/11/06	SALES DRAWING TDP PLUG CABLE KIT DULL NICKEL FINISH MOLEX INCORPORATED		
			3 PLACES	±---	±.010	CHECKED BY TMCCLELL	DATE 02/11/07			
2 PLACES	±0.25	±---	APPROVED BY BANAKIS	DATE 02/11/07	MATERIAL NO. SEE CHART	DOCUMENT NO. SD-75115-002	SHEET NO. 1 OF 1			
1 PLACE	±---	±---	DRAFT WHERE APPLICABLE MUST REMAIN WITHIN DIMENSIONS		THIS DRAWING CONTAINS INFORMATION THAT IS PROPRIETARY TO MOLEX INCORPORATED AND SHOULD NOT BE USED WITHOUT WRITTEN PERMISSION					

75115-2072	75115-3072	72	X	CONTACT PRODUCT MARKETING
75115-2048	75115-3048	48		
75115-2038	75115-3038	38	X	CONTACT PRODUCT MARKETING
75115-2028	75115-3028	28		
75115-2018	75115-3018	18		
PLUG CABLE KIT (4-40 JACKSCREW)	PLUG CABLE KIT (M3 JACKSCREW)	CIRCUIT SIZE	NOT TOOLED	