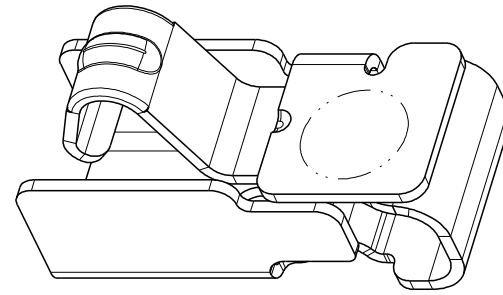
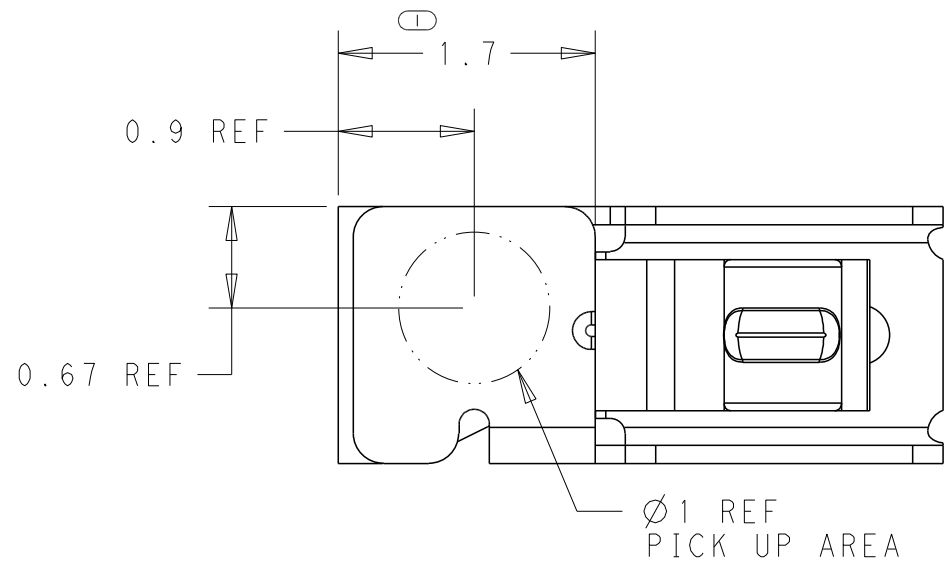
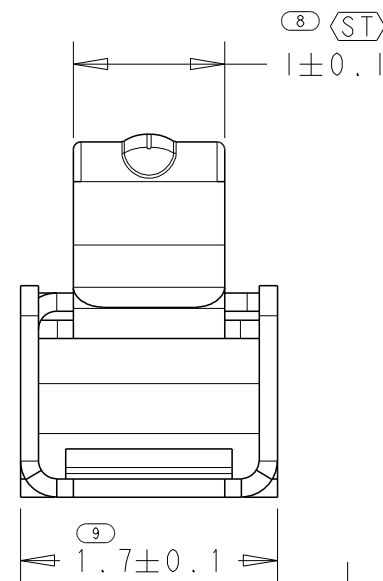
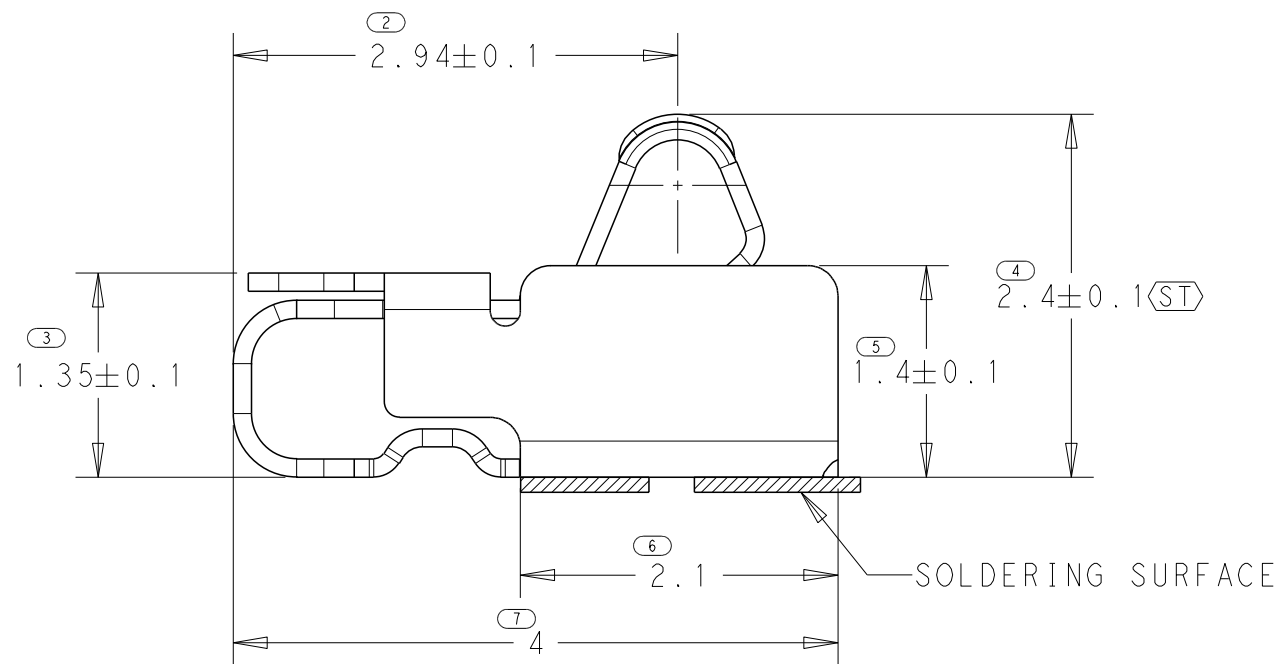
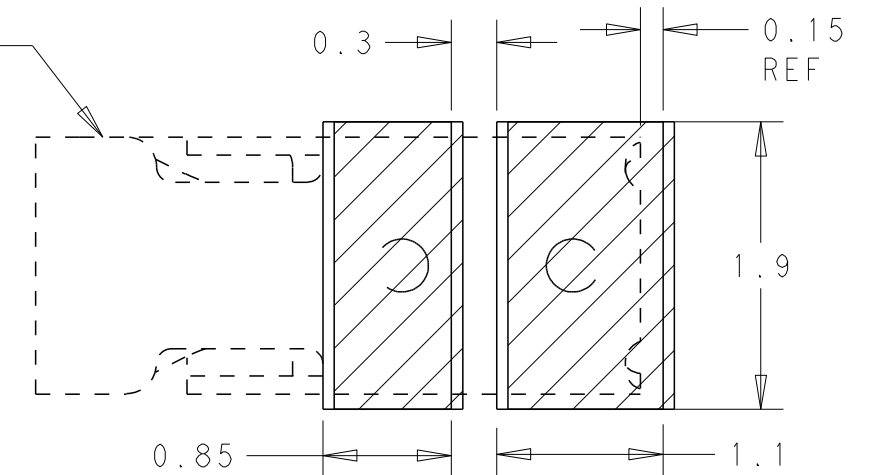


REVISIONS

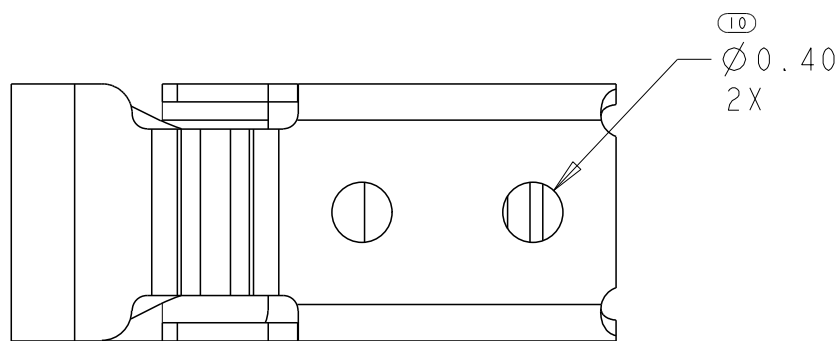
P	LTR	DESCRIPTION	DATE	DWN	APVD
	A1	RELEASED ECR-15-007714	16JUL2015	J. J	W. H



CONNECTOR PROFILE



RECOMMENDED P.C.B LAYOUT TOLERANCE ±0.05



- 1. PART NUMBER: 2286211-3.
- 2. MATERIAL: COPPER ALLOY . THICKNESS=0.12MM.
- 3. FINISH : 2um MIN. NICKEL UNDERLAYER ALL OVER .  
0.5um MIN. GOLD PLATING ON CONTACT AREA.  
0.05um MIN. GOLD PLATING ON SOLDER AREA .
- 4. NORMAL FORCE: 0.8N MIN AT NORMAL HEIGHT 1.60 MM.
- 5. WORKING RANGE: 1.40MM ~ 2.00 MM
- 6. RECOMMENDED SOLDERING THICKNESS 0.10MM.
- 7. FEATURES IDENTIFIED AS STATISTIACLLY TOLERANCED <ST>

THIS DRAWING IS A CONTROLLED DOCUMENT.

DWN JONE JI 26MAR14

CHK WENKE HE 26MAR14

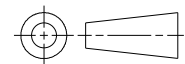
APVD WENKE HE 26MAR14



TE Connectivity

DIMENSIONS:

mm



TOLERANCES UNLESS OTHERWISE SPECIFIED:

0-PLC	±0.2
1-PLC	±0.3
2-PLC	±0.25
3-PLC	±0.15
4-PLC	±0.1
ANGLES	±

MATERIAL

-

FINISH

-

NAME

108-115073

PRODUCT SPEC

APPLICATION SPEC

WEIGHT

-

CUSTOMER DRAWING

NAME

HIGH CURRENT SPRING FINGER

SIZE

CAGE CODE

DRAWING NO

A3

00779

C=2286211

RESTRICTED TO

-

SCALE 20:1

SHEET 1 OF 2

REV A1

4

3

2

1

THIS DRAWING IS UNPUBLISHED.

RELEASED FOR PUBLICATION

04MAR2004

© COPYRIGHT 04MAR2004 BY -

ALL RIGHTS RESERVED.

REVISIONS

P	LTR	DESCRIPTION	DATE	DWN	APVD
-	-	SEE SHEET 1	-	-	-

18.4 REF  
12.4  
Ø 330

PEELING ANGLE  
165°~180°  
PEELING FORCE  
0.1N~1.0N

WITH PRODUCT CHARGE  
5000EA/REEL  
NO EMPTY POCKETS  
ARE PERMITTED

300MIN COVER TAPE  
100mm MIN WITHOUT CHARGE

160mm MIN  
WITHOUT CHARGE

➔ DIRECTION OF TOP OF REEL

⑪ 4±0.1  
⑫ 1.75  
⑬ 12±0.3  
4.4 REF  
PICK UP AREA

⑭ 0.4

SECTION A - A

- 3 ; AS SHOWN

THIS DRAWING IS A CONTROLLED DOCUMENT.

DWN JONE JI 26MAR14

CHK WENKE HE 26MAR14

APVD WENKE HE 26MAR14

PRODUCT SPEC

108-115073

APPLICATION SPEC

WEIGHT

-

CUSTOMER DRAWING

TE Connectivity

NAME

HIGH CURRENT SPRING FINGER

SIZE

A3

CAGE CODE

-

DRAWING NO

C-2286211

RESTRICTED TO

-

SCALE 1:1

SHEET 2 OF 2

REV A1

DIMENSIONS:

mm

TOLERANCES UNLESS  
OTHERWISE SPECIFIED:  
± 0.2

0-PLC	±
1-PLC	±0.3
2-PLC	±0.25
3-PLC	±0.15
4-PLC	±0.1
ANGLES	±

FINISH

SEE NOTE

MATERIAL

SEE NOTE

1470-19 (3/13)