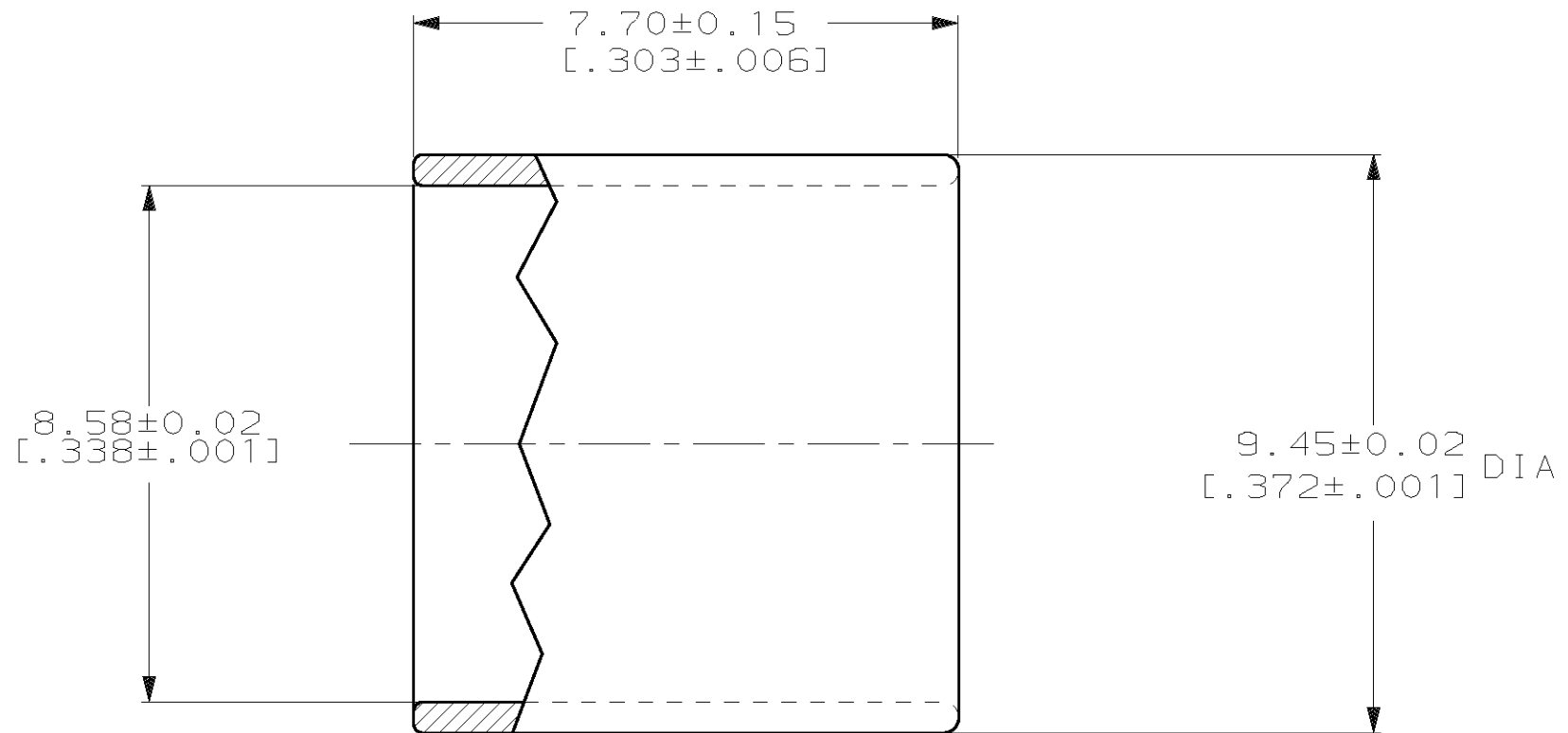
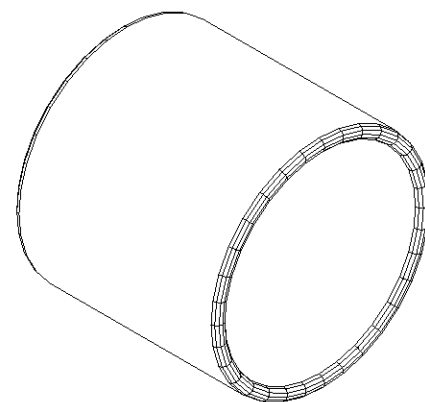


THIS DRAWING IS UNPUBLISHED. RELEASED FOR PUBLICATION, 19
 © COPYRIGHT 19 BY AMP INCORPORATED. ALL INTERNATIONAL RIGHTS RESERVED.

LOC	DIST	P	F	ZONE	LTR	DESCRIPTION	DATE	APPD
CE	16				C	REVISE PER 0A00-0588-03	26MAR04	KG/SB



1 BULK PACKAGED, 100 PCS.

1 OBSOLETE 501785-5
 501785-1
 PART NUMBER

DO NOT SCALE PRINT. UNLESS SPECIFIED DIMENSIONS IN mm TOLERANCES ON: 2 PLC DEC ± - 3 PLC DEC ± - ANGLES ± -		DR B. BRIGGS 8-10-89	AMP INCORPORATED Harrisburg, Pa. 17105
MATERIAL COPPER	CHK D. SONNER 8-10-89	APPD S. OWENS 8-10-89	
FINISH -	APPD S. OWENS 8-10-89	NAME CRIMP RING, OUTER, FIXED SHROUD DUPLEX, OPTIMATE	SIZE B
	PRODUCT SPEC -		FSCM NO 00779
	APPLICATION SPEC -		DRAWING NO 501785
	WEIGHT -		SCALE 10:1
			SHEET 1 OF 1