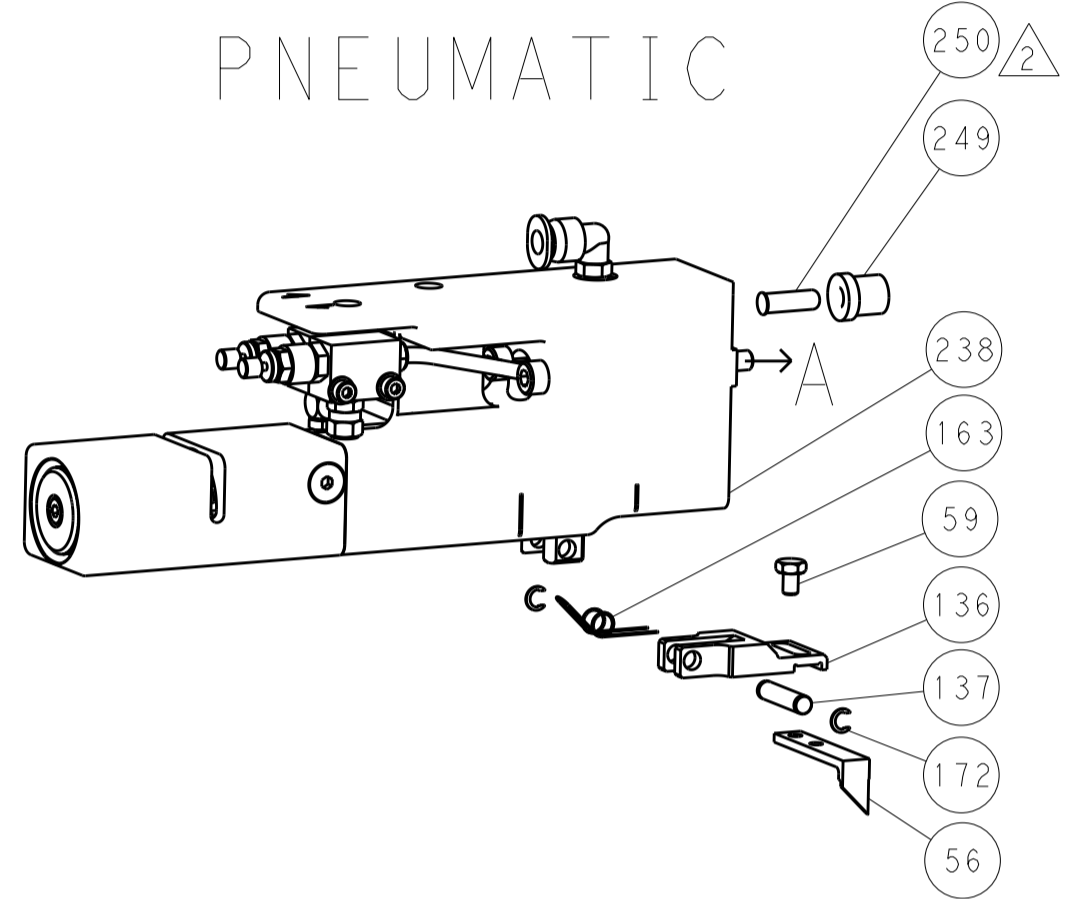


LOC		DIST		REVISIONS			
P	LTN	DESCRIPTION	DATE	DMN	APVD		
A	66	SEE SHEET 1					

FEED TYPE MECHANICAL



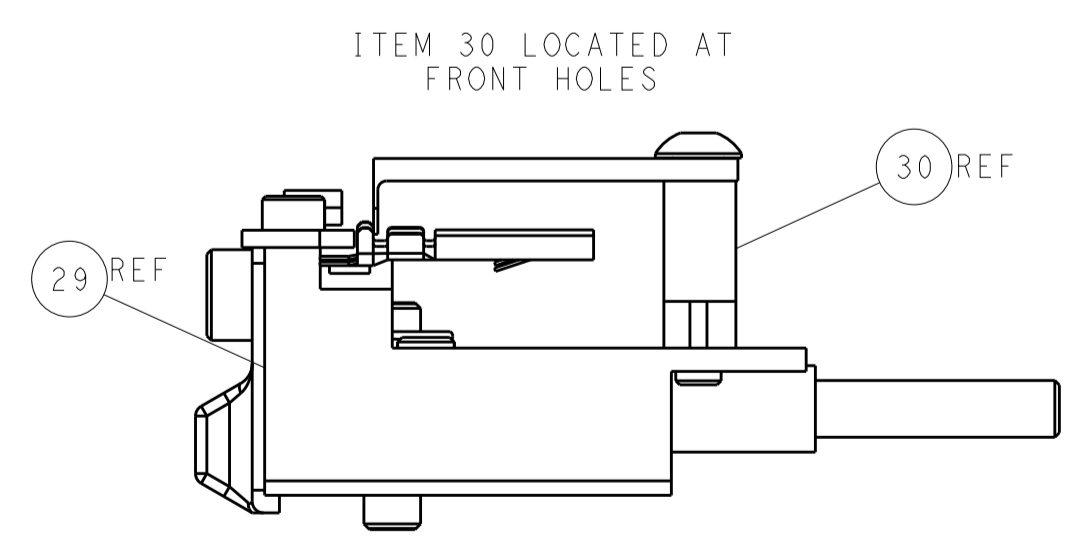
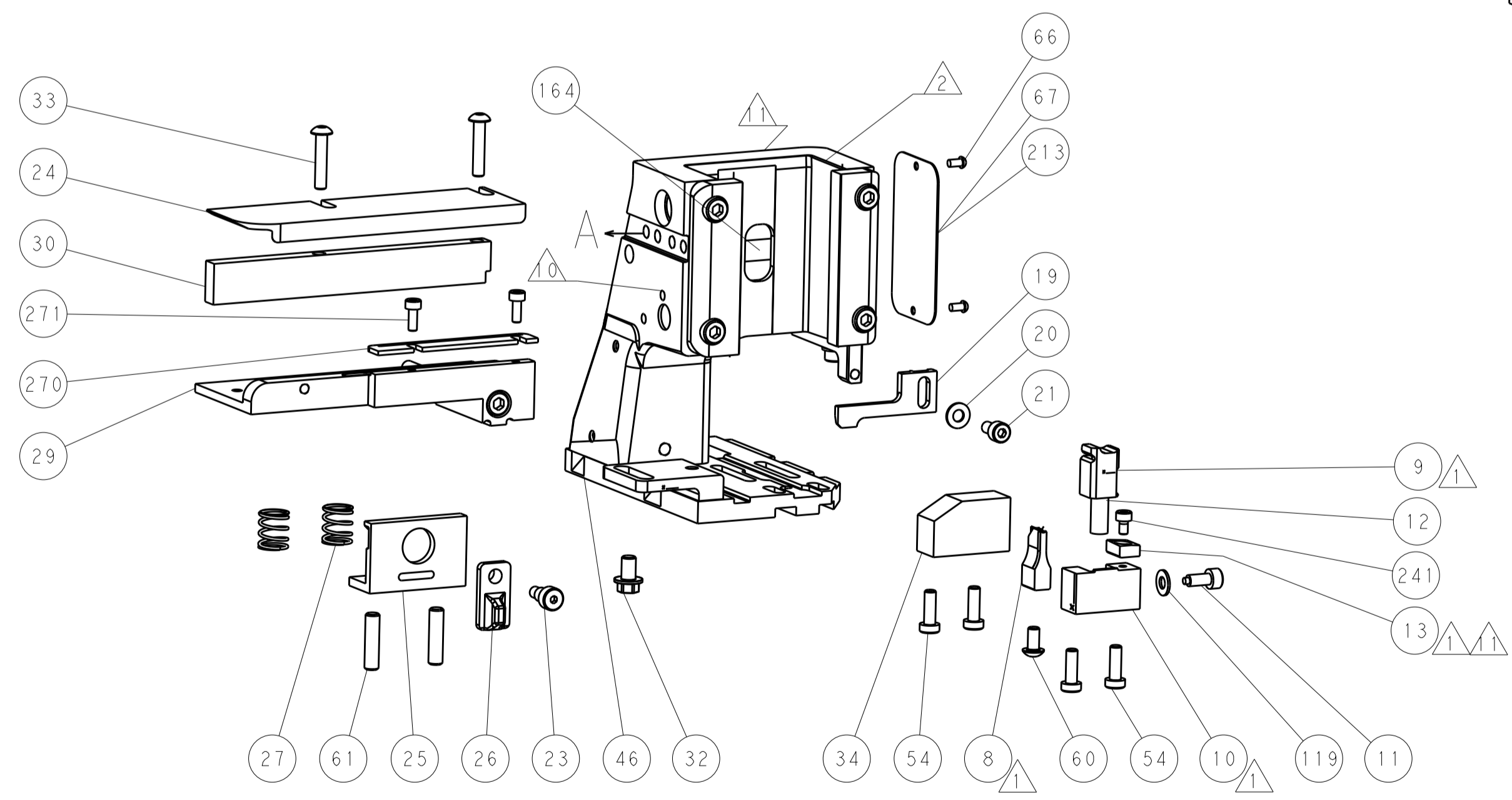
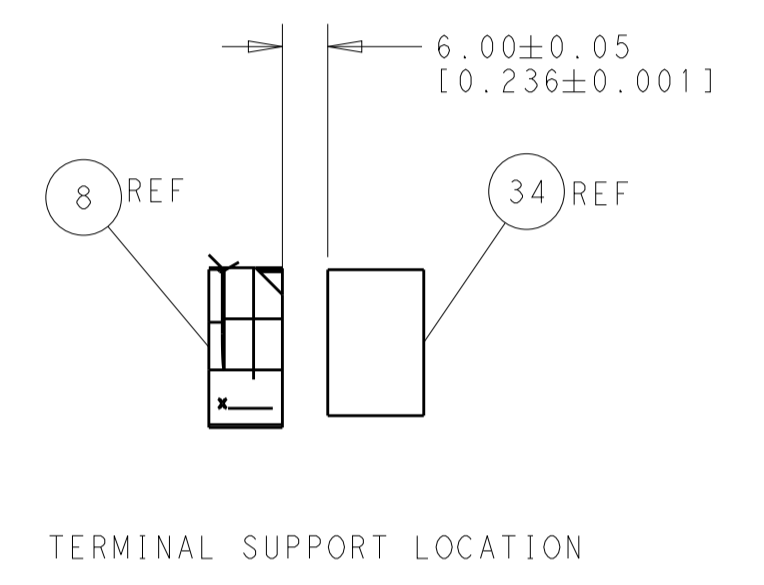
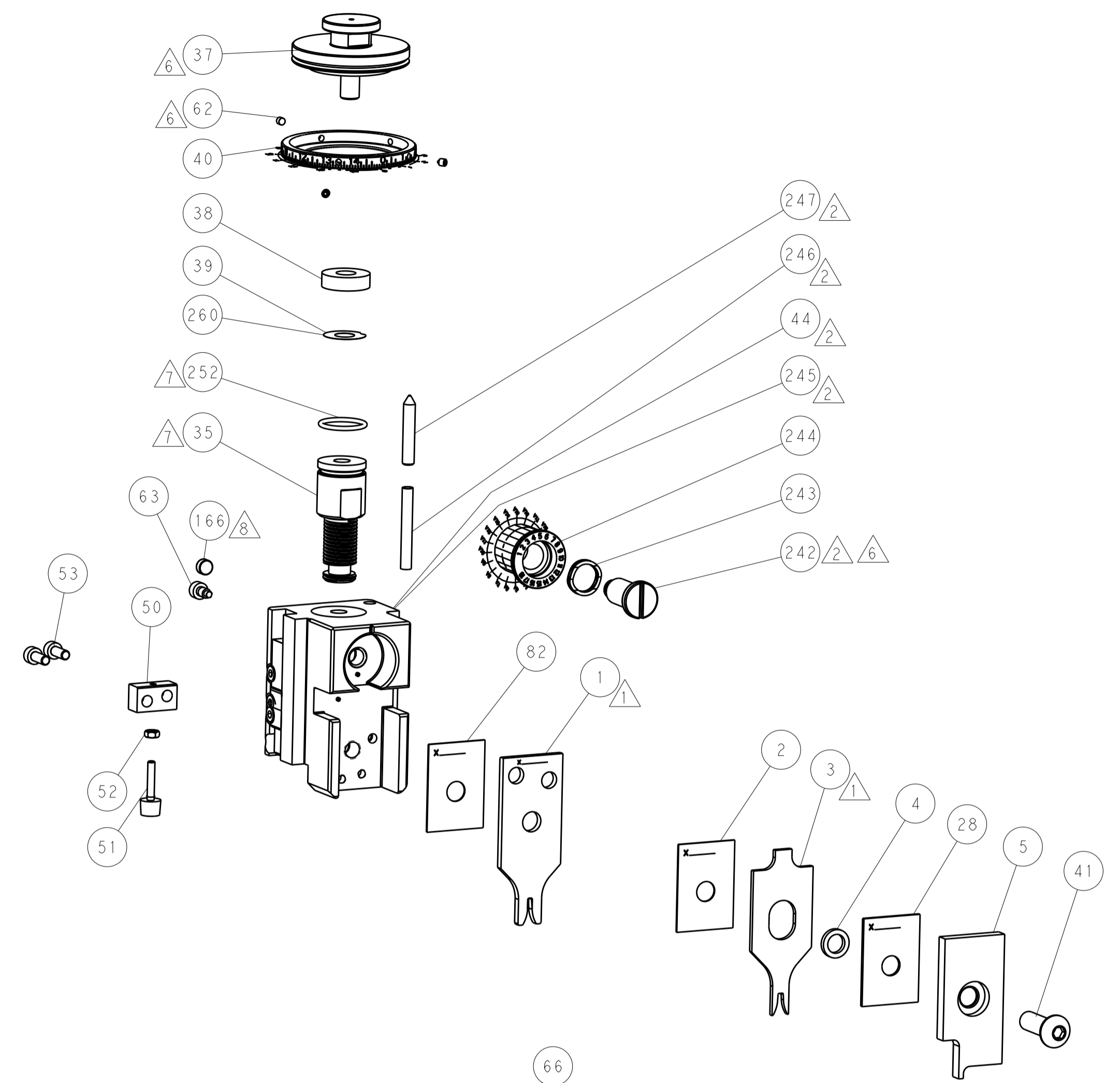
PNEUMATIC



SERVO LATCH PLATE



CAM POSITIONS



ATLANTIC VERSION
 Shown on sheets 1 of 4 & 2 of 4
 (Pacific version shown on sheets 3 of 4 & 4 of 4)

DIMENSIONS:		TOLERANCES UNLESS OTHERWISE SPECIFIED:		DWG: L. ZHANG 24AUG2011		TE Connectivity	
mm	0 PLC ±0.5	1 PLC ±0.5	2 PLC ±0.13	3 PLC ±0.013	4 PLC ±0.001	APVD: S. XI 24AUG2011	Harrisburg, PA 17105-3608
MATERIAL:		FINISH:		NAME: Ocean Side Feed Applicator		RESTRICTED TO:	
				SIZE: CAGE CODE: DRAWING NO: A1 00779 ©=2151019		SCALE: 1:2 SHEET 2 OF 4 REV E1	

APPLICATOR STYLE CONVERSION CHART. Table with columns for Part Number, Revision, Description, Feed Type, Convert To, and Part Numbers Required. Includes a diagram of the Pacific Version Terminator Interface Adapter.

APPLICATOR DATA table with columns for Crimp Size and Type. Also includes Applicator Instructions 408-10135.

TERMINAL DATA: TE TERMINAL TE CRIMP SPECIFICATION. TERMINAL NAME: PIN/SOCKET, MATE-N-LOK.

Table with columns for Wire Strip Length and Insulation Diameter Range. Includes terminal application specifications for (A)114-1010, (B)114-1011, and (C)114-1012.

TERMINALS APPLIED table listing TE terminal numbers and their corresponding part numbers, such as (C) 61115-1, (C) 61314-1, etc.

WIRE SIZE table with columns for Crimp Height (INCH [mm]) and Crimp Height Reference Setting. Lists settings for 18 AWG to 24 AWG.

- 1. RECOMMENDED SPARE PARTS
2. GREASE BEARING SURFACES LIGHTLY
3. LUBRICATE DAILY PER THE APPLICATOR INSTRUCTION SHEET SUPPLIED WITH THE APPLICATOR.
4. APPLICATOR SPECIFIC DATA TO BE ENTERED INTO BLANK MEMORY CHIP AT ASSEMBLY...
5. ADJUSTMENT OF THE STRIPPER MAY BE REQUIRED WHEN MOVING THE APPLICATOR BETWEEN BENCH AND LEADMAKER APPLICATIONS.
6. APPLY PART NUMBER 1-23419-5 LOCTITE TO THREADS OF ITEMS 62 & 242.
7. GREASE THREADS, GROOVE AND O-RING ON ITEMS 139 & 152.
8. MAGNET MUST BE ORIENTED CORRECTLY IN ORDER TO PROPERLY ACTUATE THE COUNTER.
9. CRIMP HEIGHT REFERENCE SETTING WAS THE SETTING USED WHEN THE APPLICATOR WAS QUALIFIED AT THE FACTORY...
10. SPARE FEED CAM STORAGE LOCATION REFER TO INSTRUCTION SHEET FOR ADDITIONAL INFORMATION.
11. TO CONVERT THE APPLICATOR TO A NON-CARRIER CUTTING STYLE, REMOVE ITEM 13 AND ATTACH TO THE LOCATION ON BACK SIDE OF THE HOUSING...

*WARNING
ON INSTALLATION, SET WIRE DISC, ITEM 40 TO LARGEST WIRE SIZE SETTING. USE OF SETTINGS BELOW MINIMUM REQUIRED CRIMP HEIGHT SETTING WILL CAUSE DAMAGE TO CRIMP TOOLING.

Table with columns for Part No and Description. Lists parts like 2168083-1 (SCR, SKT HD CAP, RoHS, M3 X 8.0) and 2119782-1 (FINE ADJUST HEAD ASM, PACIFIC STYLE).

PACIFIC VERSION
Shown on sheets 3 of 4 & 4 of 4
(Atlantic version shown on sheets 1 of 4 & 2 of 4)

REVISIONS table with columns for Description, Date, and Rev. Includes revision 1: SEE SHEET 1.

Large multi-column table listing parts and their specifications. Columns include item numbers, quantities, descriptions, and item numbers. Lists various components like SPRING, COMPRESSION; CAM, SNAIL, INSULATION ADJUSTMENT; WASHER, WAVE SPRING, CREST-TO-CREST; etc.

Product specification form including DIMENSIONS, TOLERANCES UNLESS OTHERWISE SPECIFIED, MATERIAL, FINISH, WEIGHT, and SCALE. Includes a drawing of a wire cross-section and a note about customer accessible production drawings.

LOC		DIST		REVISIONS			
A	66	P	LTM	DESCRIPTION	DATE	DMN	APVD
		-	-	SEE SHEET 1	-	-	-

FEED TYPE MECHANICAL



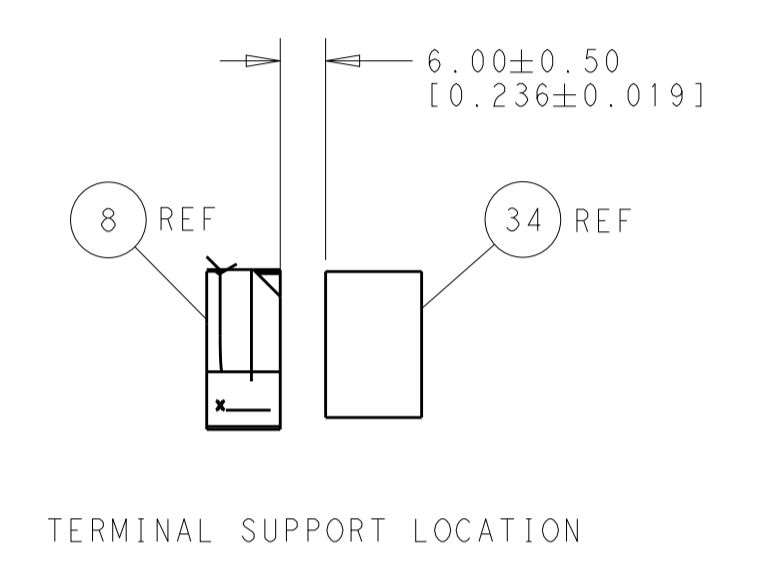
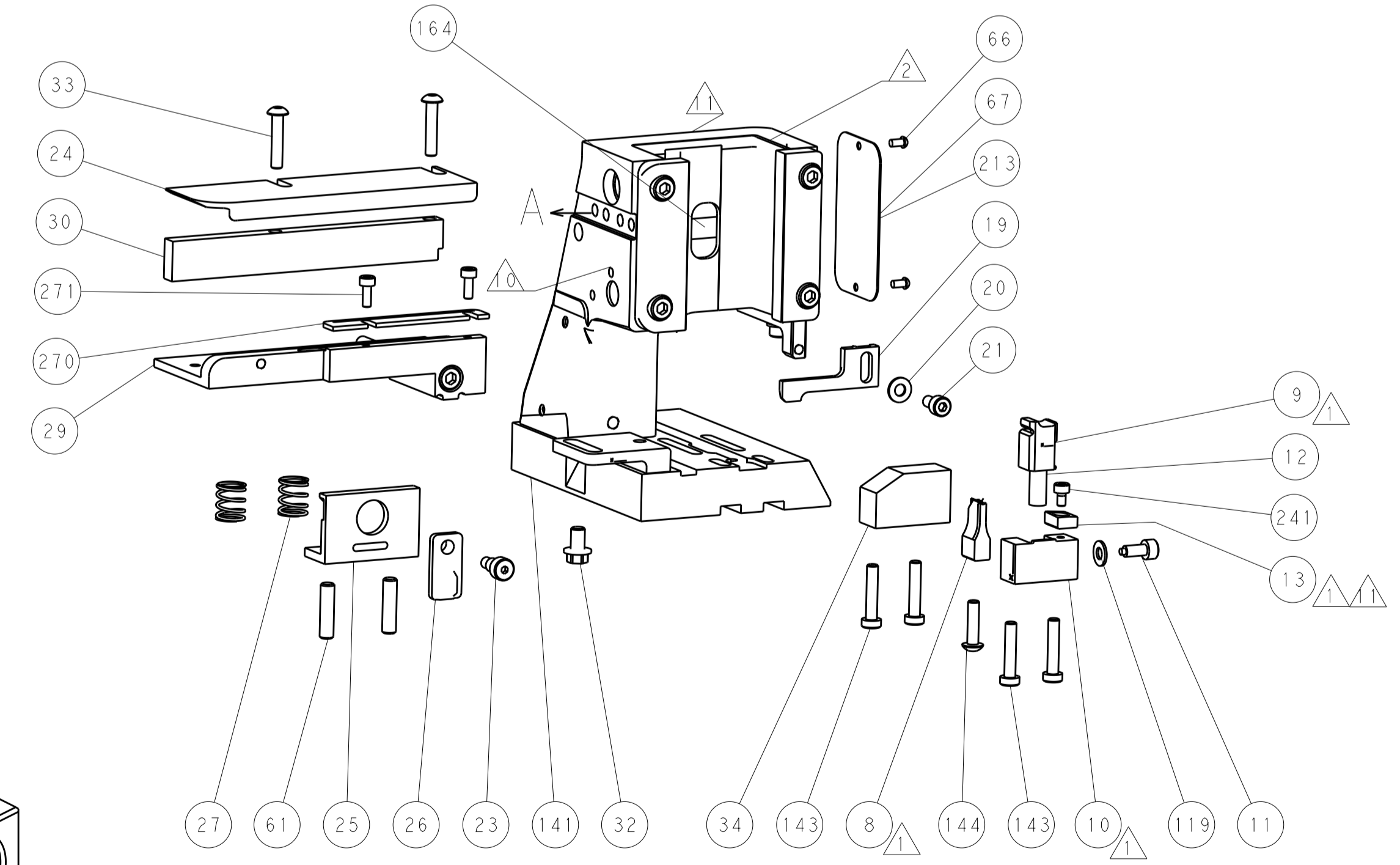
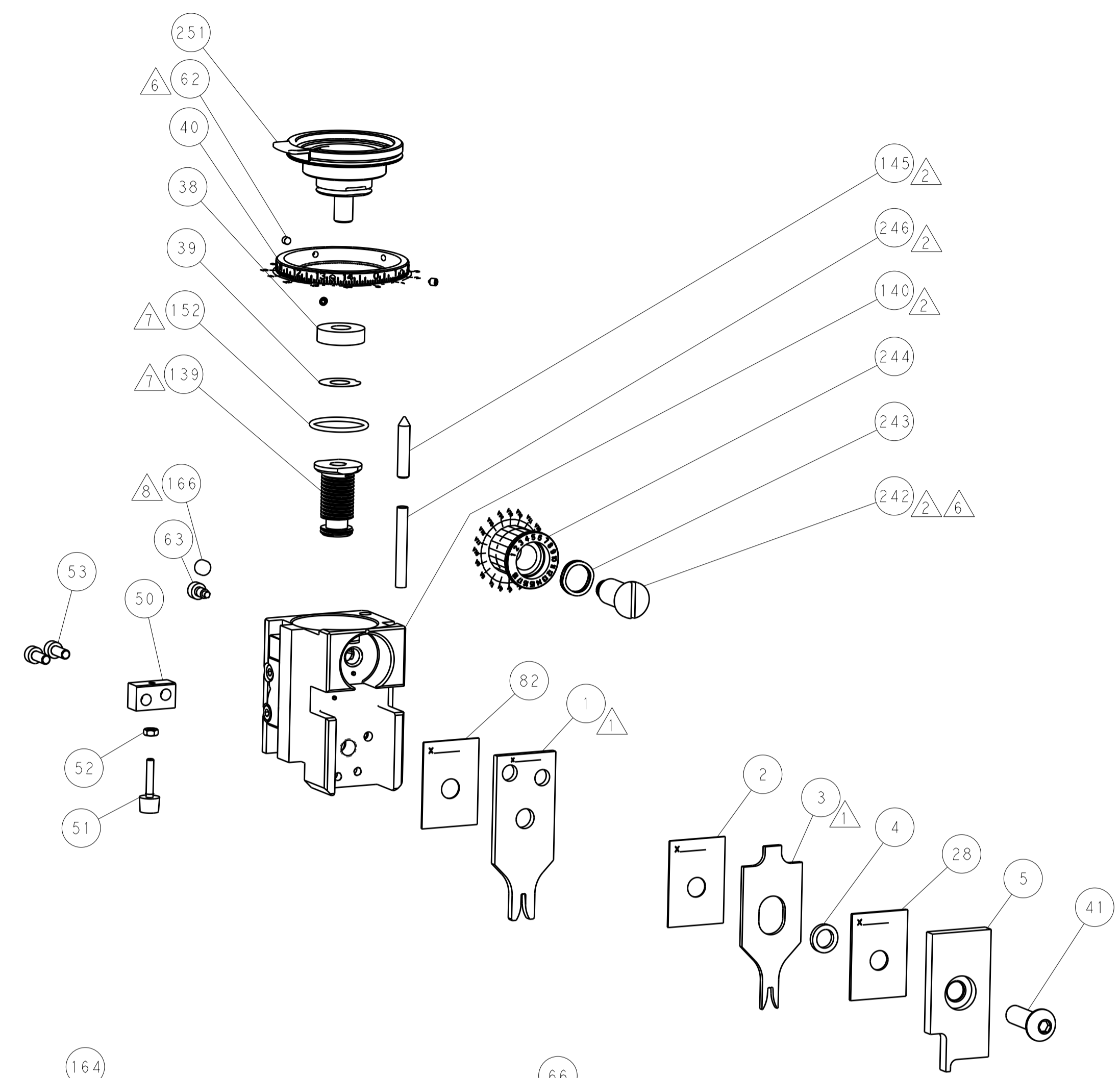
PNEUMATIC



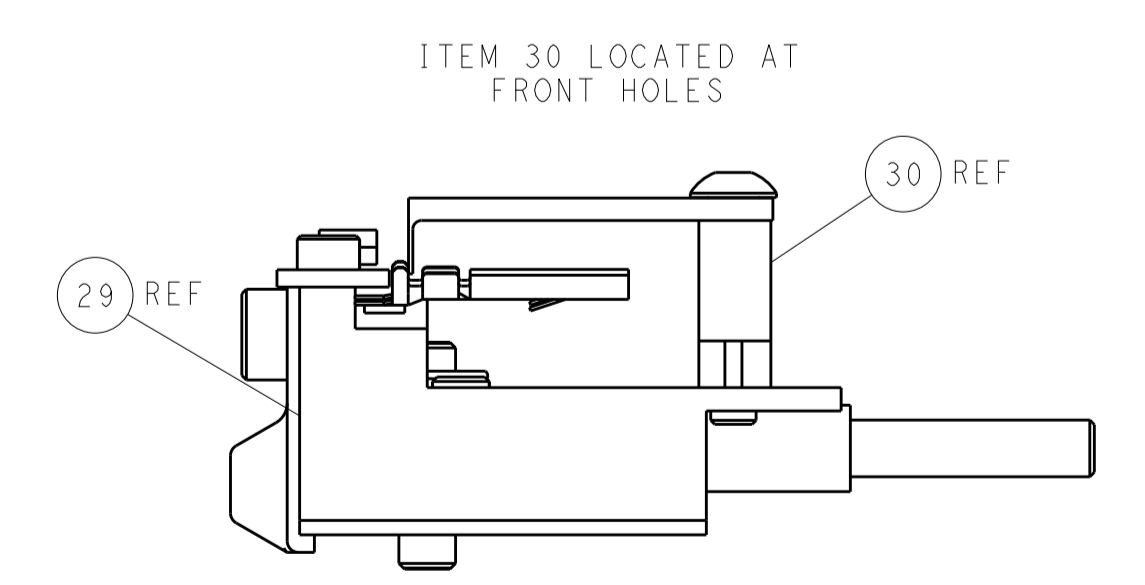
SERVO LATCH PLATE



CAM POSITIONS



TERMINAL SUPPORT LOCATION



ITEM 30 LOCATED AT FRONT HOLES

FEED TRACK POSITION GUIDE BY INSULATION BARREL

PACIFIC VERSION
 Shown on sheets 3 of 4 & 4 of 4
 (Atlantic version shown on sheets 1 of 4 & 2 of 4)

DIMENSIONS:		TOLERANCES UNLESS OTHERWISE SPECIFIED:		DMN	24AUG2011	TE Connectivity Harrisburg, PA 17105-3608
mm	0 PLC ±0.5	1 PLC ±0.5	2 PLC ±0.13	CHK	24AUG2011	
	3 PLC ±0.013	4 PLC ±0.001	ANGLES ±0.001	APVD	24AUG2011	NAME
MATERIAL	FINISH	WEIGHT	Customer Accessible Production Drawing	S-XI	00779	©=2151019
SCALE		SHEET		OF		REV
1:2		4		4		E1