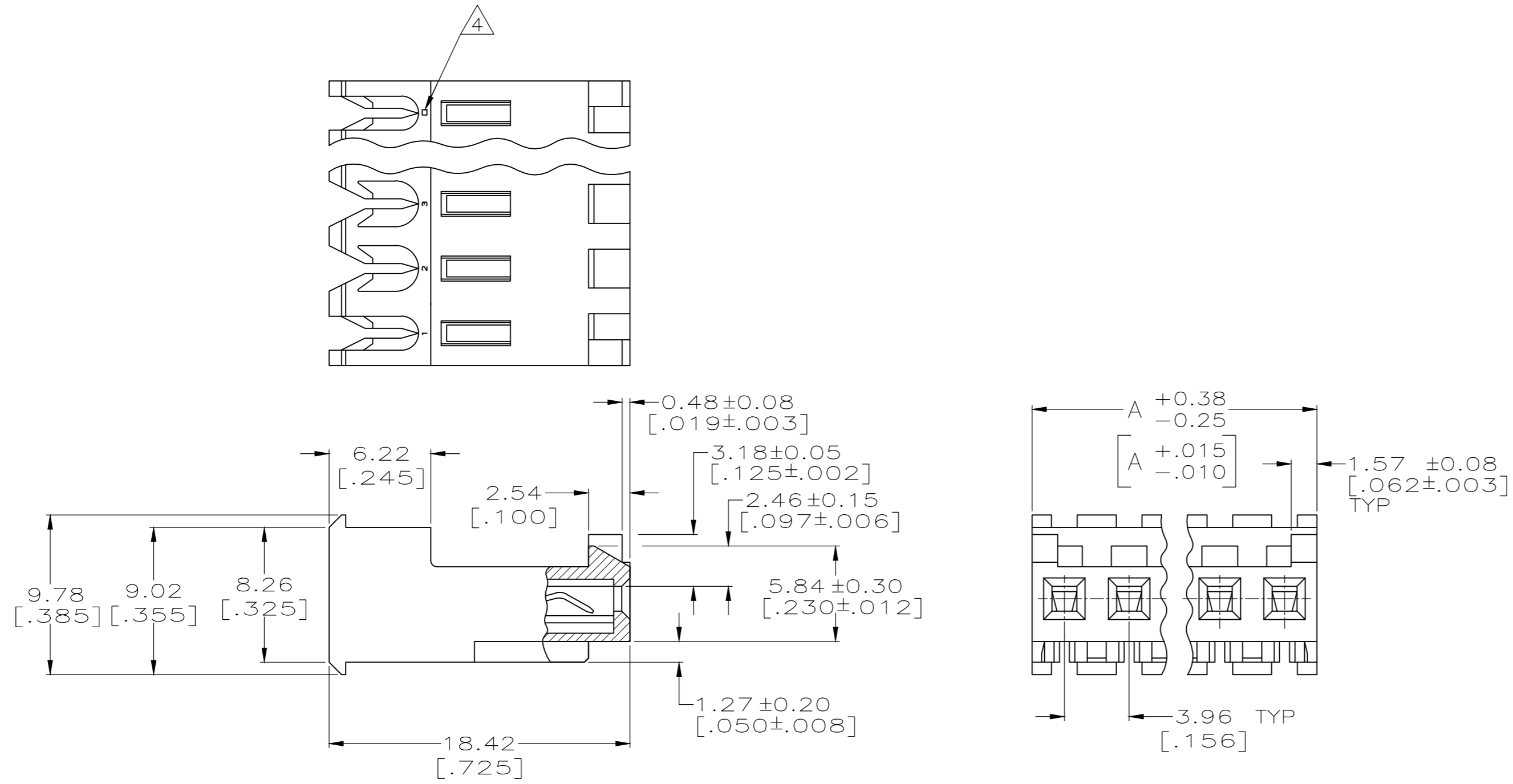


THIS DRAWING IS UNPUBLISHED. RELEASED FOR PUBLICATION
 © COPYRIGHT - By - TE CONNECTIVITY ALL RIGHTS RESERVED.

LOC	DIST	REVISIONS					
CM	00	P	LTR	DESCRIPTION	DATE	DWN	APVD
		L		ECR-13-008537	16SEP13	M.T	D.Z
		L1		ECO-14-012257	04NOV2014	KR	OC



- 1 MATERIAL: CONNECTOR - NYLON UL94V-2 (ORANGE).
 CONTACTS - 0.00076[.000030] GOLD THK OR 0.00008[.000003] MIN THK
 GOLD FLASH OVER 0.00068[.000027] THK PALLADIUM NICKEL,
 PER TE CONNECTIVITY'S DISCRETION. IN CONTACT AREA WITH MATTE TIN FOR
 -2 THRU -28, MATTE WHISKER MITIGATED TIN FOR
 3-644718-2 THRU 4-644718-4 OVER NICKEL UNDERPLATE.
- 2 CONTACTS ACCEPT 18 AWG WIRE WITH 2.41[.095] MAX INSULATION DIAMETER.
- 3 CONTACTS MUST ACCEPT 1.14 ± 0.03[.045 ± .001] POST AND REMAIN LOCKED IN POSITION.
- 4 IDENTIFICATION NUMBER FOR LAST CIRCUIT MAY NOT APPEAR ON ALL ASSEMBLIES.
- 5 DIMENSIONS IN BRACKETS ARE IN INCHES.
- 6 HOUSING FEATURES ARE: FEED-THRU WITH LOCKING RAMP AND POLARIZING TAB.
- 7 OBSOLETE PARTS: OBSOLETE CIS STREAMLINING PER D.RENAUD/D.SINISI

YES	55.47[2.184]	14	4-644718-4	
YES	51.51[2.028]	13	4-644718-3	
YES	47.55[1.872]	12	4-644718-2	
YES	43.59[1.716]	11	4-644718-1	
YES	39.62[1.560]	10	4-644718-0	
YES	35.66[1.404]	9	3-644718-9	
YES	31.70[1.248]	8	3-644718-8	
YES	27.74[1.092]	7	3-644718-7	
YES	23.77[.936]	6	3-644718-6	
YES	19.81[.780]	5	3-644718-5	
YES	15.85[.624]	4	3-644718-4	
YES	11.89[.468]	3	3-644718-3	
YES	7.92[.312]	2	3-644718-2	
△SUPERSEDED BY 4-644718-4	NO	55.47[2.184]	14	1-644718-4
△SUPERSEDED BY 4-644718-3	NO	51.51[2.028]	13	1-644718-3
△SUPERSEDED BY 4-644718-2	NO	47.55[1.872]	12	1-644718-2
△SUPERSEDED BY 4-644718-1	NO	43.59[1.716]	11	1-644718-1
△SUPERSEDED BY 4-644718-0	NO	39.62[1.560]	10	1-644718-0
△SUPERSEDED BY 3-644718-9	NO	35.66[1.404]	9	644718-9
△SUPERSEDED BY 3-644718-8	NO	31.70[1.248]	8	644718-8
△SUPERSEDED BY 3-644718-7	NO	27.74[1.092]	7	644718-7
△SUPERSEDED BY 3-644718-6	NO	23.77[.936]	6	644718-6
	YES	19.81[.780]	5	644718-5
	YES	15.85[.624]	4	644718-4
	YES	11.89[.468]	3	644718-3
△SUPERSEDED BY 3-644718-2	NO	7.92[.312]	2	644718-2

METRIC

THIS DRAWING IS A CONTROLLED DOCUMENT.		DWN K. WHITAKER 15MAR2004		
DIMENSIONS: mm [INCHES]		CHK D. BOSSI 15-MAR-04		
TOLERANCES UNLESS OTHERWISE SPECIFIED:		APVD D. BOSSI 15-MAR-04	NAME	
0 PLC ± -		PRODUCT SPEC	MTA 156 CONNECTOR ASSEMBLY, 18 AWG, STANDARD	
1 PLC ± -		APPLICATION SPEC	SIZE	CAGE CODE
2 PLC ± 0.13 [.005]		108-1051	A2	00779
3 PLC ± -		114-1020	DRAWING NO	
4 PLC ± -		WEIGHT	C=644718	
ANGLES ± 0°30'		CUSTOMER DRAWING	SCALE	SHEET
MATERIAL 1			4:1	1 OF 1
FINISH 1			REV	L1