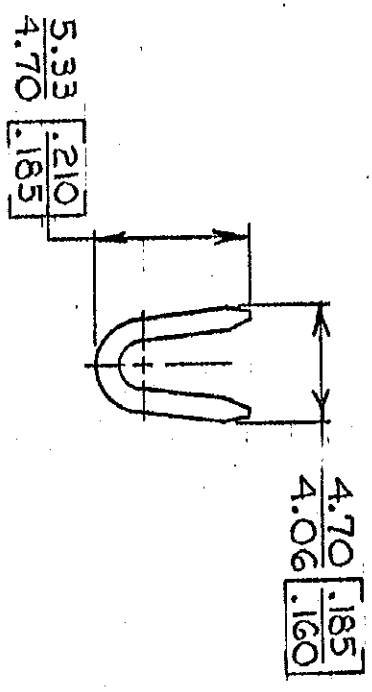
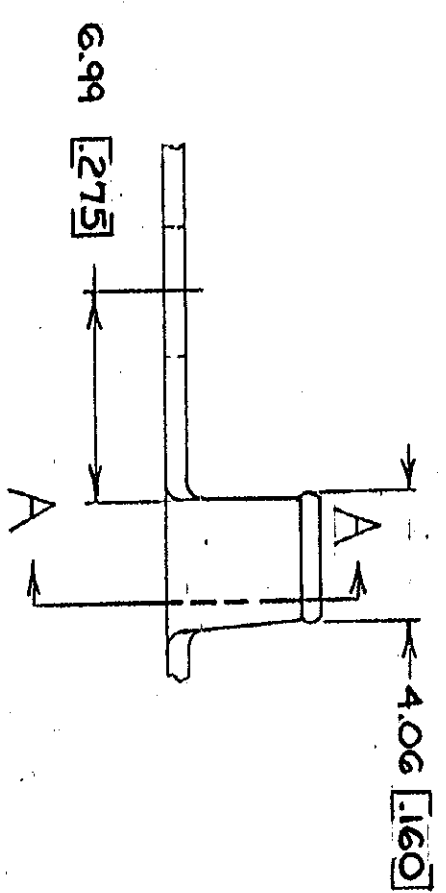
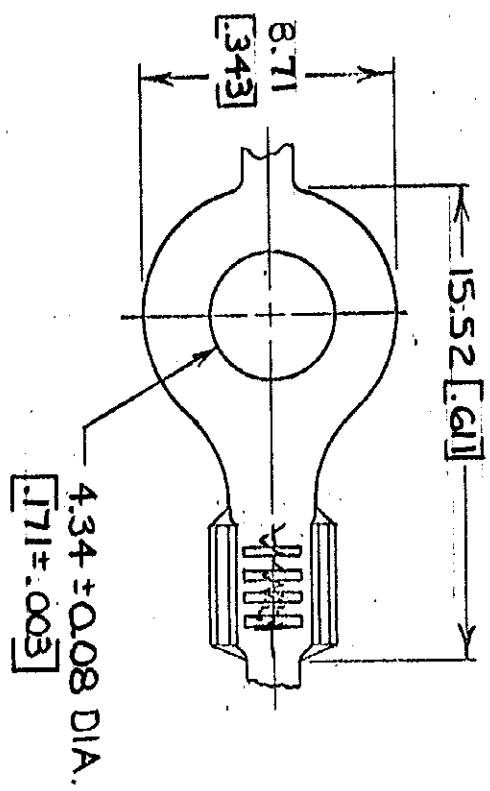


© COPYRIGHT 1965 BY AMP INCORPORATED, HARRISBURG, PA.
 ALL INTERNATIONAL RIGHTS RESERVED. AMP INCORPORATED PRODUCTS
 COVERED BY U. S. AND FOREIGN PATENTS AND/OR PATENTS PENDING.



SECT A-A

- 1. CONTINUOUS STRIP, ON REELS.
- 2. DIMENSIONS IN BRACKETS ARE IN INCHES.

METRIC

REVISIONS		DATE	APPROVED
1	REDRAWN & REVISED A-3943	9/26/78	[Signature]
2	REV PER AF-6785	9/29/78	[Signature]

UNLESS OTHERWISE SPECIFIED DIMENSIONS ARE IN MILLIMETERS. TOLERANCES ON: DECIMALS ±0.05 ANGLES 1°	CONTRACT NO.	NAME	AMP INCORPORATED Harrisburg, Pa.
MATERIAL	DR. [Signature]	SIZE	RING
SEE TABLE	CHK. [Signature]	CODE IDENT NO.	00779
FINISH	APPD. [Signature]	DRAWING NO.	40517
SEE TABLE	APPD. [Signature]	SCALE	SHEET
OTHER APPO	OTHER APPO		

M4 #8	0.8-2.0mm ² [8-14]	TIN	0.76 [030]	40517
STUD SIZE	WIRE SIZE	FINISH	MATERIAL	PART NO.