

## Base strip - GMSTB 2,5/10-G - 1766097

Please be informed that the data shown in this PDF Document is generated from our Online Catalog. Please find the complete data in the user's documentation. Our General Terms of Use for Downloads are valid (<http://phoenixcontact.com/download>)

Header, Nominal current: 12 A, Rated voltage (III/2): 630 V, Number of positions: 10, Pitch: 7.5 mm, Color: green, Contact surface: Tin, Assembly: Soldering



The figure shows a 10-position version of the product

### Product Features

- Versions with threaded flange and 7.62 mm pitch
- Plug-in direction parallel to the PCB
- Headers with angled solder pins for 630 V applications (III/2)



### Key commercial data

|                                      |   |
|--------------------------------------|---|
| Packing unit                         | 1 pc  |
| GTIN                                 | <br>4 017918 032111 |
| Weight per Piece (excluding packing) | 5.81 GRM  |
| Custom tariff number                 | 85366990  |
| Country of origin                    | Germany   |

### Technical data

#### Dimensions

|                |          |
|----------------|----------|
| Length         | 12 mm    |
| Pitch          | 7.5 mm   |
| Dimension a    | 67.5 mm  |
| Pin dimensions | 1 x 1 mm |
| Hole diameter  | 1.4 mm   |

#### General

|                   |                |
|-------------------|----------------|
| Range of articles | GMSTB 2,5/..-G |
|-------------------|----------------|

## Base strip - GMSTB 2,5/10-G - 1766097

### Technical data

#### General

|   |        |
|---|--------|
| Insulating material group               | I      |
| Rated surge voltage (III/3)             | 6 kV   |
| Rated surge voltage (III/2)             | 6 kV   |
| Rated surge voltage (II/2)              | 6 kV   |
| Rated voltage (III/3)                   | 400 V  |
| Rated voltage (III/2)                   | 630 V  |
| Rated voltage (II/2)                    | 630 V  |
| Connection in acc. with standard        | EN-VDE |
| Nominal current I <sub>N</sub>          | 12 A   |
| Maximum load current                    | 12 A   |
| Insulating material                     | PA     |
| Inflammability class according to UL 94 | V0     |
| Color                                   | green  |
| Number of positions                     | 10     |

### Classifications

#### eCl@ss

|            |          |
|------------|----------|
| eCl@ss 4.0 | 272607xx |
| eCl@ss 4.1 | 27260701 |
| eCl@ss 5.0 | 27260701 |
| eCl@ss 5.1 | 27260701 |
| eCl@ss 6.0 | 27260704 |
| eCl@ss 7.0 | 27440402 |
| eCl@ss 8.0 | 27440402 |

#### ETIM

|          |          |
|----------|----------|
| ETIM 3.0 | EC001121 |
| ETIM 4.0 | EC002637 |
| ETIM 5.0 | EC002637 |

#### UNSPSC

|               |          |
|---------------|----------|
| UNSPSC 6.01   | 30211810 |
| UNSPSC 7.0901 | 39121409 |
| UNSPSC 11     | 39121409 |
| UNSPSC 12.01  | 39121409 |
| UNSPSC 13.2   | 39121409 |

## Base strip - GMSTB 2,5/10-G - 1766097

### Approvals

#### Approvals

---

#### Approvals

CSA / UL Recognized / VDE Gutachten mit Fertigungsüberwachung / cUL Recognized / GOST / IECCEB Scheme / GOST / CCA / cULus Recognized

---


#### Ex Approvals


---


#### Approvals submitted

---

### Approval details

|  |       |       |
|--|-------|-------|
| CSA  |       |       |
|  | B     | D     |
| Nominal current I <sub>N</sub>   | 10 A  | 10 A  |
| Nominal voltage U <sub>N</sub>   | 300 V | 300 V |

|   |       |       |
|---|-------|-------|
| UL Recognized  |       |       |
|   | B     | D     |
| Nominal current I <sub>N</sub>  | 15 A  | 10 A  |
| Nominal voltage U <sub>N</sub>  | 300 V | 300 V |

|   |       |  |
|---|-------|--|
| VDE Gutachten mit Fertigungsüberwachung  |       |  |
| Nominal current I <sub>N</sub>  | 12 A  |  |
| Nominal voltage U <sub>N</sub>  | 400 V |  |

# Base strip - GMSTB 2,5/10-G - 1766097

## Approvals

|                    |       |       |
|--------------------|-------|-------|
| cUL Recognized     |       |       |
|                    | B     | D     |
| Nominal current IN | 15 A  | 10 A  |
| Nominal voltage UN | 300 V | 300 V |

|      |  |
|------|--|
| GOST |  |
|------|--|

|                    |       |
|--------------------|-------|
| IECEE CB Scheme    |       |
|                    |       |
| Nominal current IN | 12 A  |
| Nominal voltage UN | 400 V |

|      |  |
|------|--|
| GOST |  |
|------|--|

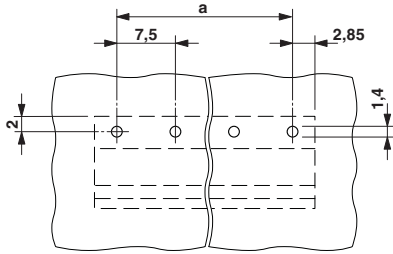
|                    |       |
|--------------------|-------|
| CCA                |       |
|                    |       |
| Nominal current IN | 12 A  |
| Nominal voltage UN | 400 V |

|                  |  |
|------------------|--|
| cULus Recognized |  |
|------------------|--|

## Drawings

# Base strip - GMSTB 2,5/10-G - 1766097

Drilling diagram



Dimensioned drawing

