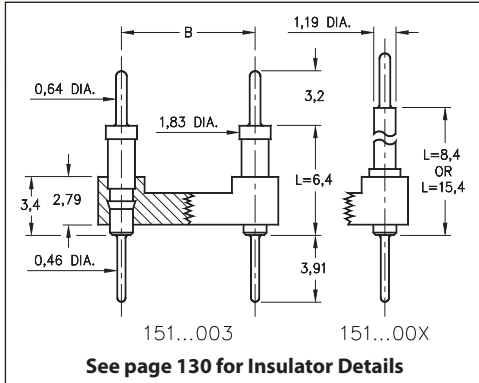


DUAL-IN-LINE HEADERS

SERIES 151...003, 004, 005 • INTERCONNECT • OPEN FRAME



• Series 151 DIL Headers combine 0,64 dia. tails with pluggable 0,46 dia. solder tails

• Series:
 151...003 uses MM #5503 pins
 151...004 uses MM #5504 pins
 151...005 uses MM #5505 pins
 See page 214 for details

• Insulators are high temperature thermoplastic, suitable for all soldering operations

• For Electrical, Mechanical and Environmental Data, see page 264 for details



Total number of pins				Quantity per tube	ORDERING INFORMATION					
	A	B	C		L = 6,4	L = 8,4	L = 15,4			
10	12,6	5,08	7,6	41	151-10-210-00-003000	151-10-210-00-004000	151-10-210-00-005000			
4	5,0	7,62	10,1	102	151-10-304-00-003000	151-10-304-00-004000	151-10-304-00-005000			
6	7,6	7,62	10,1	67	151-10-306-00-003000	151-10-306-00-004000	151-10-306-00-005000			
8	10,1	7,62	10,1	50	151-10-308-00-003000	151-10-308-00-004000	151-10-308-00-005000			
10	12,6	7,62	10,1	40	151-10-310-00-003000	151-10-310-00-004000	151-10-310-00-005000			
14	17,7	7,62	10,1	28	151-10-314-00-003000	151-10-314-00-004000	151-10-314-00-005000			
16	20,3	7,62	10,1	25	151-10-316-00-003000	151-10-316-00-004000	151-10-316-00-005000			
18	22,8	7,62	10,1	22	151-10-318-00-003000	151-10-318-00-004000	151-10-318-00-005000			
20	25,3	7,62	10,1	20	151-10-320-00-003000	151-10-320-00-004000	151-10-320-00-005000			
22	27,8	7,62	10,1	18	151-10-322-00-003000	151-10-322-00-004000	151-10-322-00-005000			
24	30,4	7,62	10,1	16	151-10-324-00-003000	151-10-324-00-004000	151-10-324-00-005000			
28	35,5	7,62	10,1	14	151-10-328-00-003000	151-10-328-00-004000	151-10-328-00-005000			
20	25,4	10,16	12,7	20	151-10-420-00-003000	151-10-420-00-004000	151-10-420-00-005000			
22	27,8	10,16	12,7	18	151-10-422-00-003000	151-10-422-00-004000	151-10-422-00-005000			
24	30,4	10,16	12,7	16	151-10-424-00-003000	151-10-424-00-004000	151-10-424-00-005000			
28	35,5	10,16	12,7	14	151-10-428-00-003000	151-10-428-00-004000	151-10-428-00-005000			
32	40,6	10,16	12,7	12	151-10-432-00-003000	151-10-432-00-004000	151-10-432-00-005000			
24	30,4	15,24	17,7	16	151-10-624-00-003000	151-10-624-00-004000	151-10-624-00-005000			
28	35,5	15,24	17,7	14	151-10-628-00-003000	151-10-628-00-004000	151-10-628-00-005000			
32	40,6	15,24	17,7	12	151-10-632-00-003000	151-10-632-00-004000	151-10-632-00-005000			
36	45,7	15,24	17,7	11	151-10-636-00-003000	151-10-636-00-004000	151-10-636-00-005000			
40	50,8	15,24	17,7	10	151-10-640-00-003000	151-10-640-00-004000	151-10-640-00-005000			
42	53,3	15,24	17,7	9	151-10-642-00-003000	151-10-642-00-004000	151-10-642-00-005000			
48	60,9	15,24	17,7	8	151-10-648-00-003000	151-10-648-00-004000	151-10-648-00-005000			
50	63,5	15,24	17,7	8	151-10-650-00-003000	151-10-650-00-004000	151-10-650-00-005000			
52	66,0	15,24	17,7	7	151-10-652-00-003000	151-10-652-00-004000	151-10-652-00-005000			
50	63,5	22,86	25,3	8	151-10-950-00-003000	151-10-950-00-004000	151-10-950-00-005000			
52	66,0	22,86	25,3	7	151-10-952-00-003000	151-10-952-00-004000	151-10-952-00-005000			
64	81,2	22,86	25,3	6	151-10-964-00-003000	151-10-964-00-004000	151-10-964-00-005000			
XX=Plating Code See to Right					SPECIFY PLATING CODE XX =			10 ◆		
					Pin Plating			0,25µm Au		